



Informational Resources:

Environmental Protection Agency

<https://www.epa.gov/lead>

Minnesota Department of Health

<https://www.health.state.mn.us/communities/environment/lead/home/index.html>

<https://www.health.state.mn.us/communities/environment/water/rules/servlineinventory.html>

City of Lexington

https://www.ci.lexington.mn.us/page/depts_public_works



<https://arcg.is/1re0LCO>

Project Contacts

Travis Schmid | Water Operator
763-784-6849

Steve Winter | MSA | City Engineer
1 (612) 548-3121

City Hall | 763-784-2792
9180 Lexington Ave.
Lexington, MN 55014

RESPONSE NEEDED!

WATER SERVICE LINE INVENTORY PROJECT

The Environmental Protection Agency (EPA) has created new requirements to **investigate the pipe materials of water service lines within every city nationwide**. In Minnesota, the Department of Health (MDH) is administering this program in conjunction with local municipalities. The City needs your help in identifying water service lines materials. While our records indicate no lead is present in Lexington, it is a vital health concern that we identify any potential lead pipes within our water distribution system and remove them. There is funding available to assist communities with removing any lead materials discovered within our system, but we need to act quickly to take advantage of it. To be eligible for this funding, we need the assistance of every household and commercial establishment.

Please complete the self-assessment survey using the QR Code to the left or return the completed form on the reverse side of this notice to City Hall. (Additional forms are available at City Hall. The City must identify 100% of all service lines as required by the EPA. If you are not connected to the municipal water system, you do not need to complete the survey.

What do you need to do?

1. Locate your water service line in the lower level of your home or crawl space.
2. **Scan the adjacent QR code to fill out the online survey** or fill out a paper survey, available at City Hall.
3. If you can't locate your service line or need assistance identifying the pipe material, please do not hesitate to contact us at 763-784-6849. A City Public Works employee or member of our engineering consulting firm (MSA) will come to your residence at no charge and assist in identifying your service line material.

Please complete the online survey or return a completed form no later than June 7th. The City will be coordinating door-to-door inspections later this summer if we do not receive your survey response.

City of Lexington

Water Service Line Inventory Survey






This survey will assist the City of Lexington MN in completing its water service line inventory required by the Environmental Protection Agency (EPA) Lead and Copper Rule Revisions.

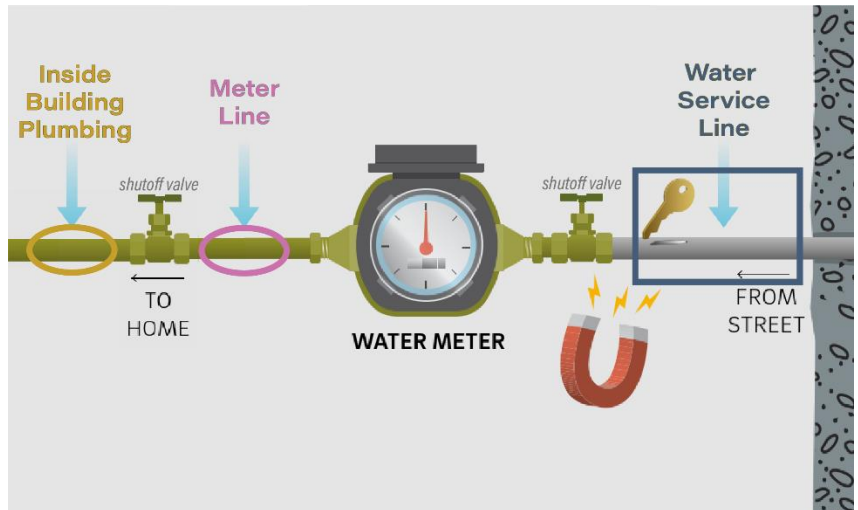
Address: _____

Property Owner Name or Representative: _____

Email Address: _____ Phone: _____

The water meter is most commonly located in the basement utility room of residential properties. We need to verify the pipe material on **both sides of the meter** (Water Service Line and Meter Line). The Water Service Line is the section of pipe from the wall/floor to the meter. The Meter Line is directly after the meter. Place a check mark in **each column** corresponding to the material type on each side of the Water Meter (see photo below).

Material Description	Water Service Line Material	Meter Line Material
Copper - Non-magnetic, color of a copper penny 	<input type="checkbox"/>	<input type="checkbox"/>
Ductile Iron - Magnetic, black bumpy metal pipe usually 3-inch or larger 	<input type="checkbox"/>	<input type="checkbox"/>
Galvanized - Magnetic, dull gray color 	<input type="checkbox"/>	<input type="checkbox"/>
Lead - Non-magnetic, silver-gray color that easily scratches with a coin 	<input type="checkbox"/>	<input type="checkbox"/>
Plastic - Non-magnetic, blue or black rigid pipe 	<input type="checkbox"/>	<input type="checkbox"/>



Additional Comments: _____

Return the completed form along with a picture of your service to City Hall or email a copy to smarcott@msa-ps.com with your address in the subject heading. Thank you!